

RESIDUAL DESIGN HAZARDS

(The following information has been collected from Preconstruction Information and the Amey CDM Hazard Management Process.)

- 1.11 Noise and vibration.
- 1.14 Existing overhead and underground utilities.
- 1.4 Working near live traffic.
- 1.9 Public confrontation.
- 6.1 Well's disease.

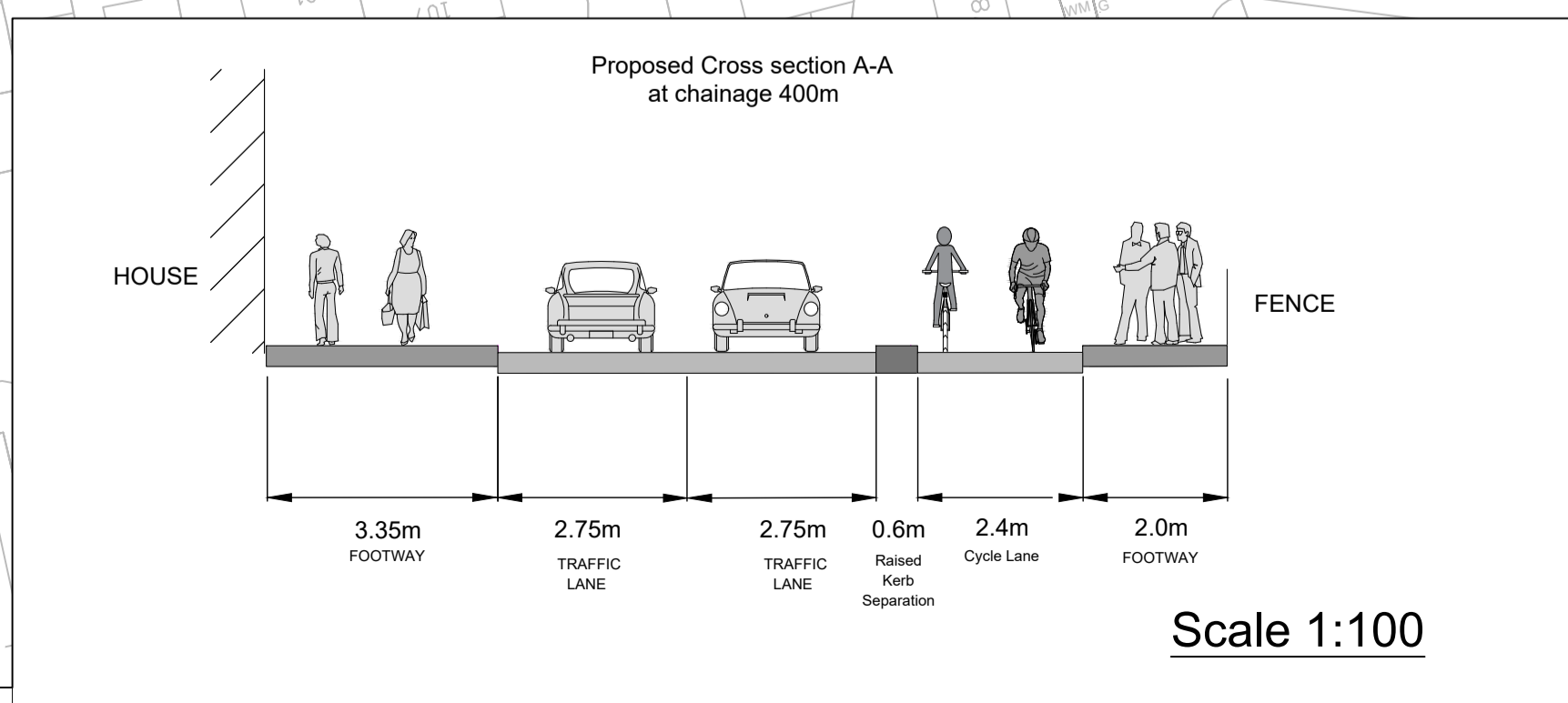
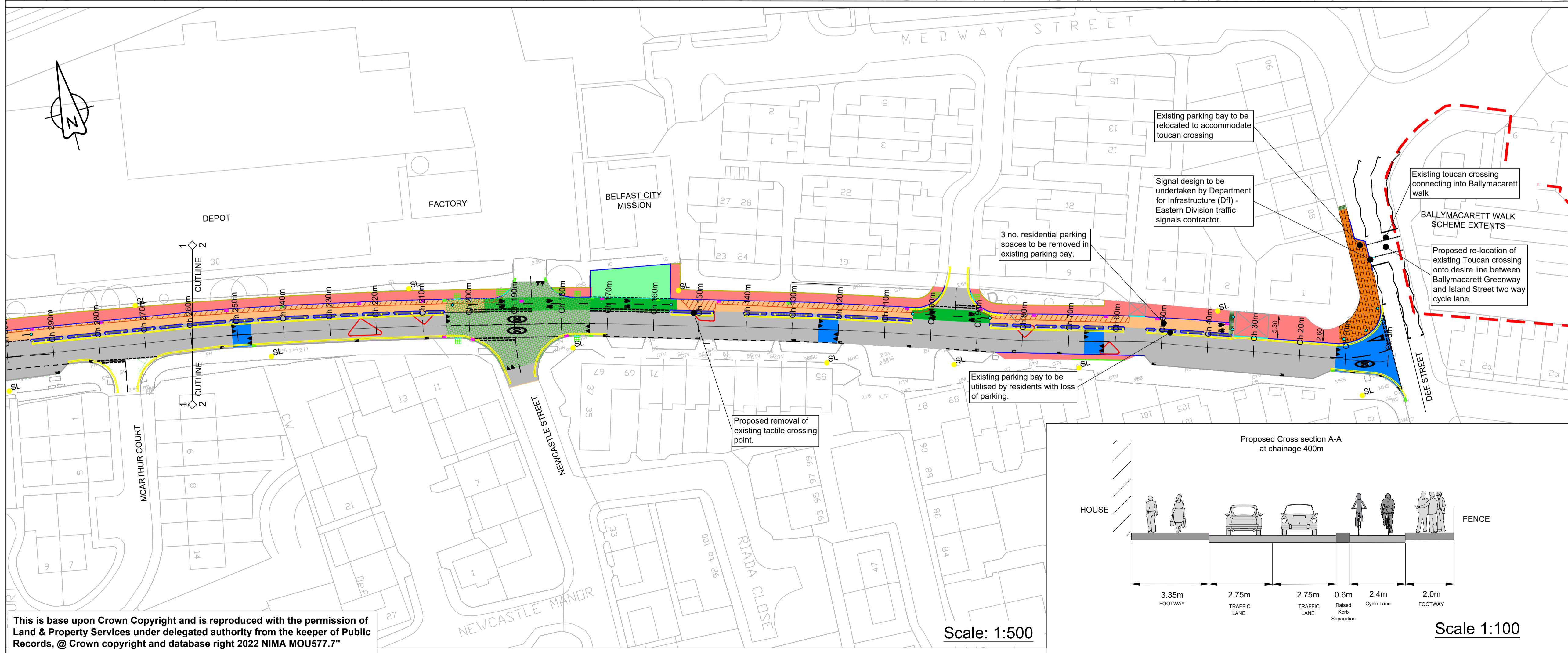
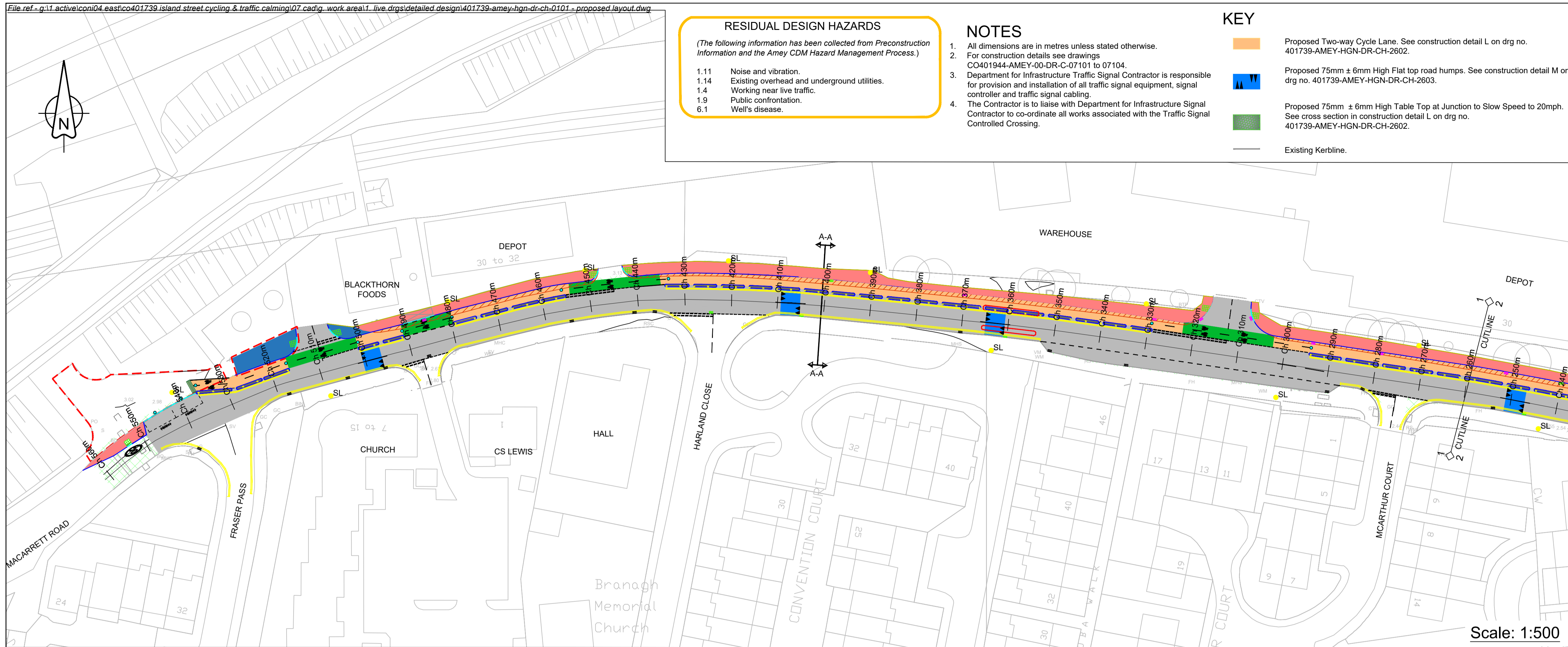
NOTES

1. All dimensions are in metres unless stated otherwise. For construction details see drawings CO401944-AMEY-00-DR-C-07101 to 07104.
2. Department for Infrastructure Traffic Signal Contractor is responsible for provision and installation of all traffic signal equipment, signal controller and traffic signal cabling.
3. The Contractor is to liaise with Department for Infrastructure Signal Contractor to co-ordinate all works associated with the Traffic Signal Controlled Crossing.

KEY

- Proposed Two-way Cycle Lane. See construction detail L on drg no. 401739-AMEY-HGN-DR-CH-2602.
- Proposed 75mm ± 6mm High Flat top road humps. See construction detail M on drg no. 401739-AMEY-HGN-DR-CH-2603.
- Proposed 75mm ± 6mm High Table Top at Junction to Slow Speed to 20mph. See cross section in construction detail L on drg no. 401739-AMEY-HGN-DR-CH-2602.
- Existing Kerbline.

- Proposed Footway (Surface course and binder resurface). See construction detail L on drg no. 401739-AMEY-HGN-DR-CH-2602.
- Proposed footway construction - refer to drawing no. 401739-AMEY-HGN-DR-CH-2602 detail L.
- Proposed Kerbline. See Construction detail A on drg no. 401739-AMEY-HGN-DR-CH-2601.
- Proposed Dropped Kerb. See Construction details B and I on drg no. 401739-AMEY-HGN-DR-CH-2601.
- Existing Traffic Calming Feature to be Removed
- Proposed Carriageway Resurfacing. See Construction detail L on drg no. 401739-AMEY-HGN-DR-CH-2602.
- Proposed Road Markings. See Road Marking Details on drg no. 401739-AMEY-HMK-DR-CH-1201.
- Proposed Coloured Surfacing on Cycle Lane. See Road Marking Details on drg no.401739-AMEY-HMK-DR-CH-1201.
- Existing Parking Bay to Remain.
- Proposed Gully to be Relocated and Replaced with Cycle Friendly Mesh. See construction details D and J on drg no. 401739-AMEY-HGN-DR-CH-2601 and drainage drg no. 401739-AMEY-HGN-DR-CH-0501-02.
- PCC Kerbed 600mm Wide Segregation islands. Construction details G and H on drg no. 401739-AMEY-HGN-DR-CH-2601.
- Proposed Delineator Bollard (3m Spacing). See Construction detail P on drg no. 401739-AMEY-HGN-DR-CH-2603.
- Proposed Bollard. See Construction detail N on drg no. 401739-AMEY-HGN-DR-CH-2603.
- Granite paved every treatment (to match Ballymacarrett walk scheme). See Construction Detail Q on drg no. 401739-AMEY-HGN-DR-CH-2603.
- Proposed Corduroy Paving. See Construction Detail F on drg no. 401739-AMEY-HGN-DR-CH-2601.
- Private Access to be Retained.
- Proposed Carriageway widening to facilitate cycle lane. See construction detail L on drg no. 401739-AMEY-HGN-DR-CH-2602.
- Existing Streetlighting Column
- Proposed Tactile Paving. Construction detail E on drg no. 401739-AMEY-HGN-DR-CH-2601.
- Existing Gully
- Proposed gully. See detail J on drg no. 401739-AMEY-HGN-DR-CH-2601 and drainage drg no. 401739-AMEY-HGN-DR-CH-0501
- Proposed Shallow Depth Channel Construction detail R on drg no. 401739-AMEY-HGN-DR-CH-2603. and drainage drg no. 401739-AMEY-HGN-DR-CH-0501.
- Proposed Edge Kerbing. Construction detail C on drg no. 401739-AMEY-HGN-DR-CH-2601.



Rev	Revision details	Drwn	Chkd	Appd	Date
Designed:	NA				Date: 26.02.2022
Drawn:	DMCC				Date: 26.02.2022
Snr Tech Check:	AGC				Date: 30.03.2022
Checked:	CD				Date: 28.03.2022
Approved:	PW				Date: 01.04.2022

Copyright in this design © Amey

www.amey.co.uk

Client
 Department for Infrastructure
 Eastern Division, Annex 7,
 Castle Buildings, Stormont Estate
 Upper Newtownards Road, Belfast, BT4 3SQ

Project Name
Island Street - Cycling and Traffic Calming

Drawing Title
Proposed Layout

Original Drawing Size : A1 Scale : As Shown
 Dimensions : -

Drawing Status
FOR CONSTRUCTION Suitability
 A1

Drawing No
 401739-AMEY-00-XX-DR-C-0101 Rev
 P01